

WALL MOUNT ASSEMBLY INSTRUCTIONS

ITEM: #75100 • #75101 • #75102 • #75103 • #75104



ACCENT DECOR

WHAT YOU NEED



TAPE MEASURE



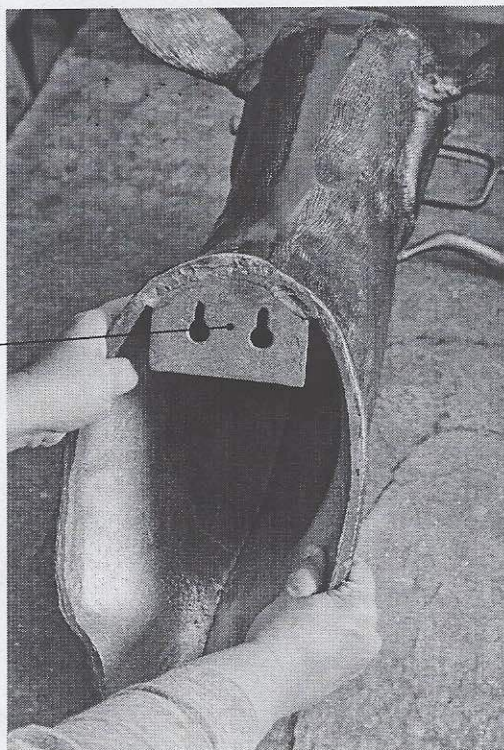
WALL MOUNTING
HARDWARE



DRILL

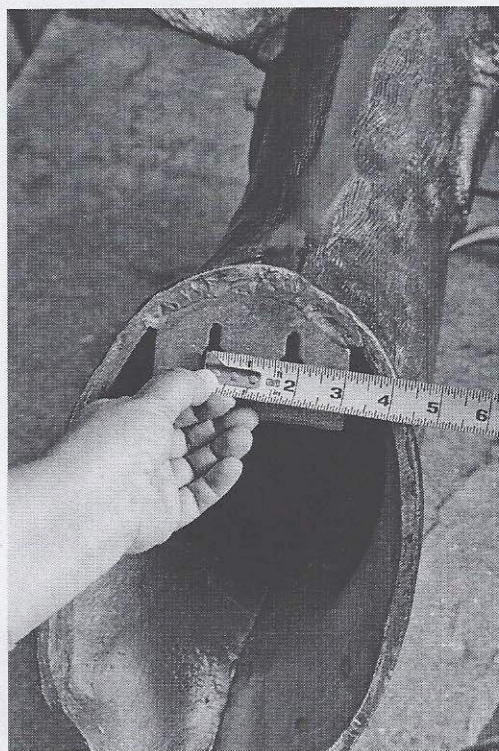
STEP 1

Find the center point **A** on your wall mount sculpture. This will help guide in the hanging process later.



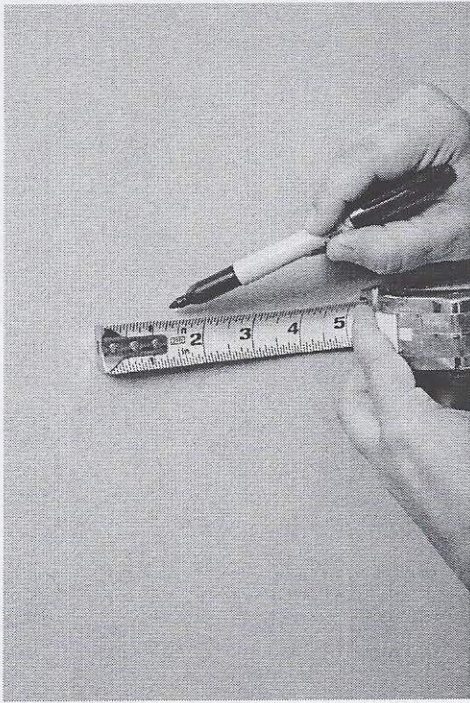
STEP 2

Measure the distance between keyholes (as close to center of the elongated part as possible) then measure from your center point (see step. 1) to the top of the keyhole.



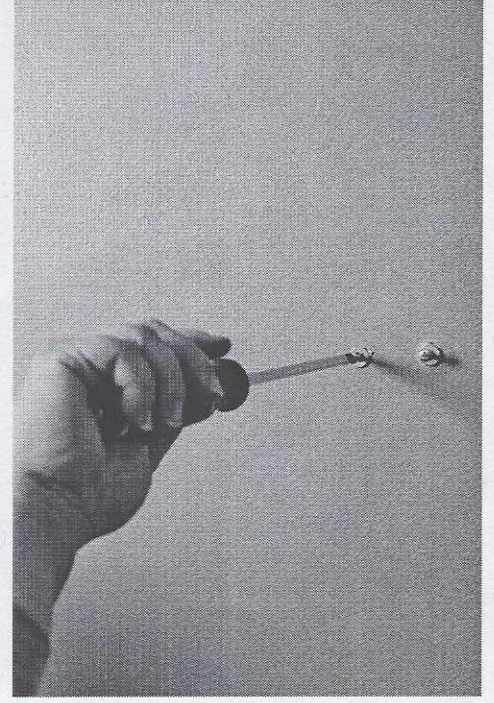
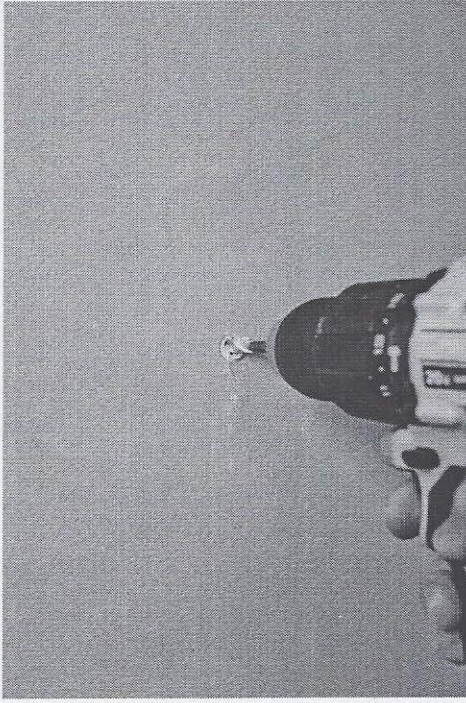
STEP 3

Purchase and install drywall anchors and hardware for a weight load of 100lbs minimum.



STEP 4

Hold the wall mount in its desired position and mark the center spot on the wall with a pencil. Using your measurements from Step 2, mark where your screws are going to go by starting from the center mark you just made.



STEP 5

Make sure screws have adequate spacing from wall. You should be able to feel the wall mount slide down into place in the keyholes on back. If it does not, you require more spacing.



STEP 6

Mount your wall mount on the hardware you just installed, then step back and enjoy!

